

Switching mode: Click the on-off button once, the light is on once, indicating that the current mode is selected, and each mode blinks every 20 seconds during use.

For example, select the induction mode: click the on-off button once, the light is on once, and then enter the mode the indicator flashes every 20 seconds (note: Click the switch button once to switch to the next mode).

Power out: All lights blink every four seconds until there is no power at all. (All when power is out function suspended)

When charging in the off state: Connect the power supply, all the indicators keep flashing to indicate that they are charging, and all the indicators are steady on when they are full.

When charging on the power supply: connect the power supply, the indicator stays in the current mode and blinks, and the current indicator is on when it is full.

### Alert the user

- The following conditions do not fall under the scope of free warranty, but still enjoy only the cost of materials preferential maintenance service;
  - Damaged by the user due to improper transportation or storage.
  - Dismantle, repair, replace or alter the product model and warranty card by oneself.
  - Failure to follow the operation steps and precautions in the instructions, resulting in product failure.
  - There is no warranty card and it has not been disassembled and assembled at the designated repair point.
  - Failure caused by unexpected disasters or accidents, such as fire, flood, lightning strike, explosion, voltage instability, earthquake or other irresistible force.
  - Over the warranty period.

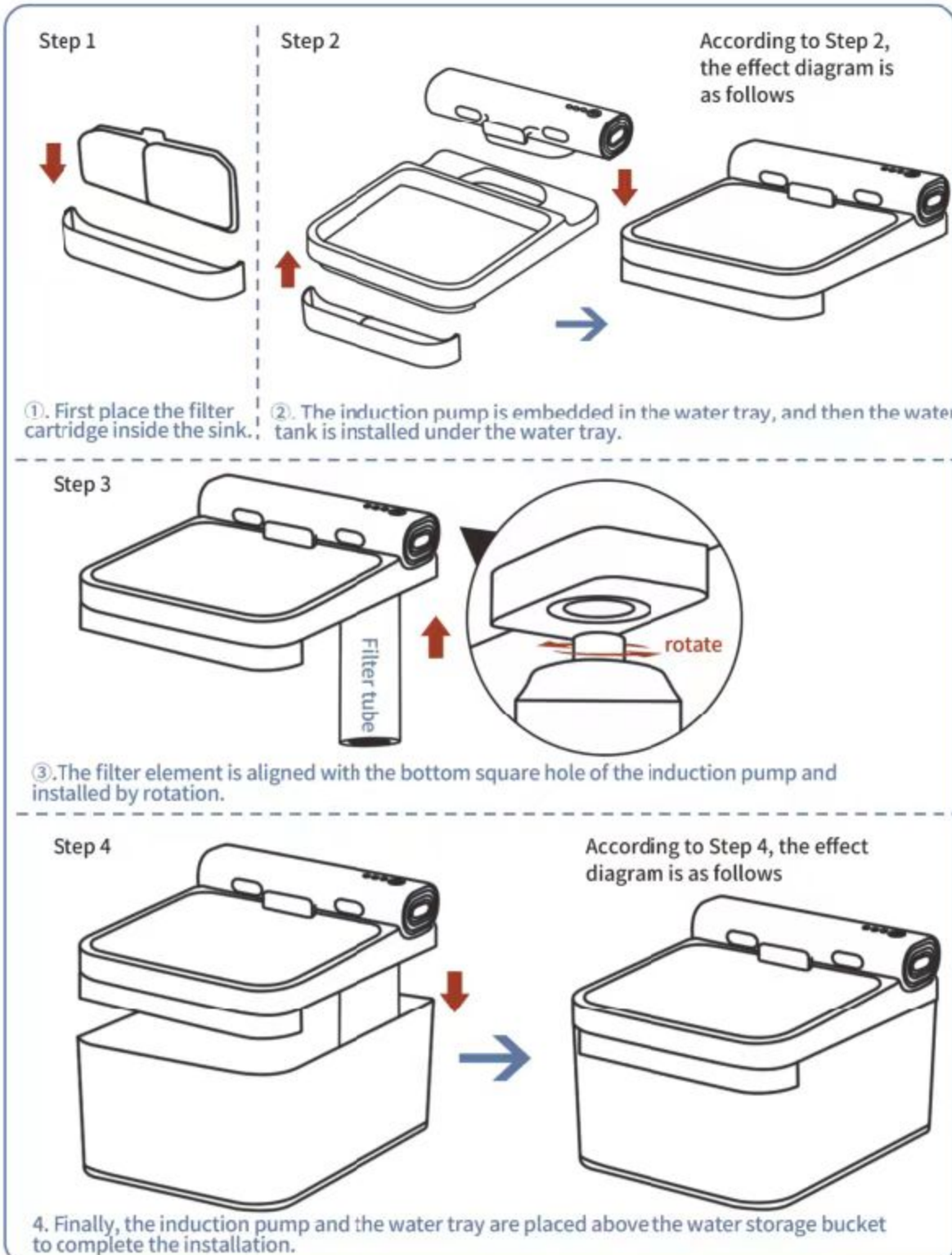
### Warranty card

This product implements "three guarantees", from the purchase date within one year, due to the manufacturing quality of the fault Warranty is provided by order number.

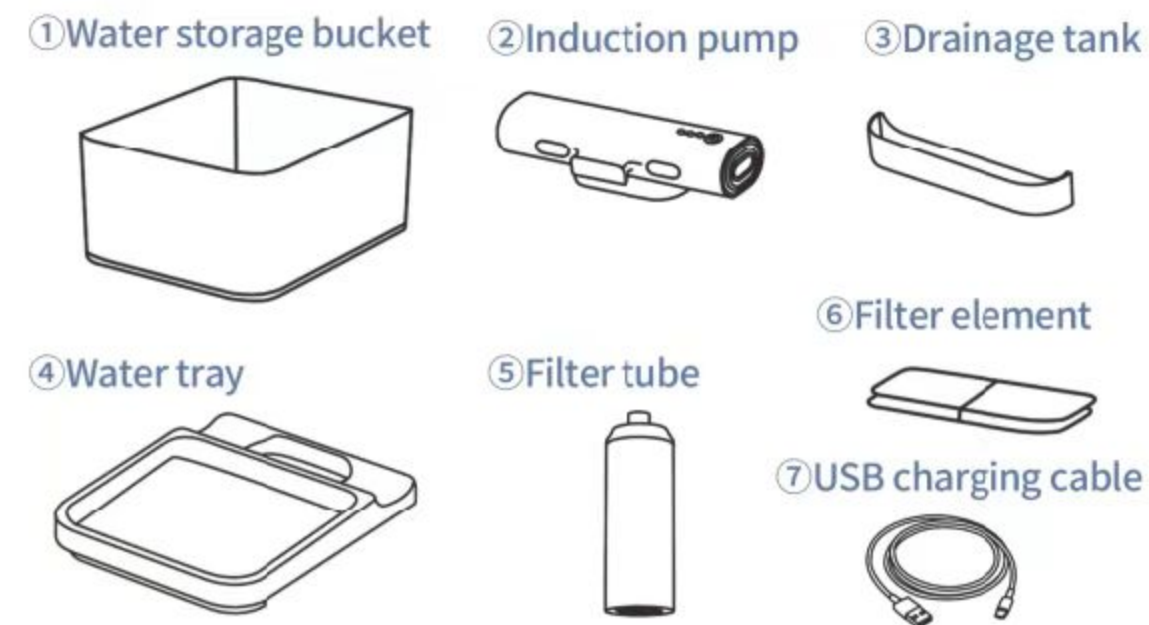
### Return and exchange registration form

Purchase platform	Account ID
Order number	Delivery address
Name of consignee	Contact number
Reason for replacement	1. If there is any quality problem, please contact customer service. 2. For return and exchange, please keep the complete package of the goods and return the card together. 3. Please contact customer service in time if you have any problem with the goods received. We will bear the freight for the quality of the goods. 4. If you need to return the goods, please contact customer service for return.
Replacement requirement	
Advice to us	
Reason for return	

### Installation procedure



### Square pet sensor water dispenser product accessories



### Product parameter

Rated power: 1 ~ 3w Input voltage: 5V-1A Lithium battery capacity: 2200mAh  
 Capacity: 4L Gauge: 18x21x15cm Applicable ambient temperature: 0~40°C

### Matters needing attention

- It is recommended to change the water every 3 days/once, and clean the water storage bucket and filter element.
- Clean the water pipe once a month to prevent foreign matter from entering the material blocking the pipe holes.
- The water storage bucket is not heat resistant, so the internal water temperature should not exceed 60°C

### Usage method

Power on: Press and hold the on key for 3-4 seconds  
 Shutdown: Press and hold the on key for 3-4 seconds  
 Induction mode: The water will automatically come out when the pet is near, the water will always come out during the stay of the pet, and the water will automatically stop when the pet leaves for 3 seconds;  
 Intermittent mode: water every 30 minutes, each time for 20 seconds;  
 Continuous mode: Continuous water flow.

Material: PP+ABS

Implementation standard: GB/T 26125-2011



MADE IN CHINA